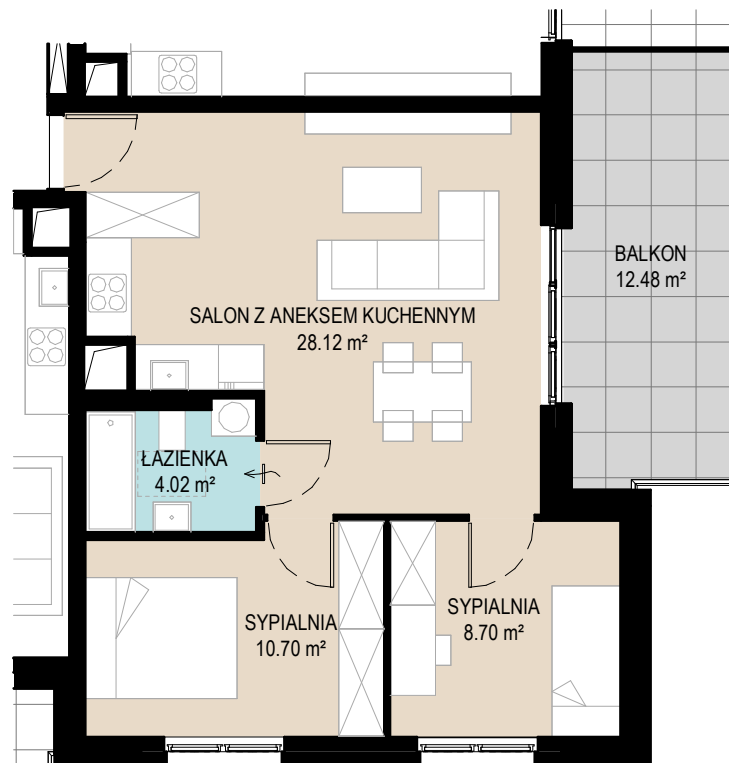


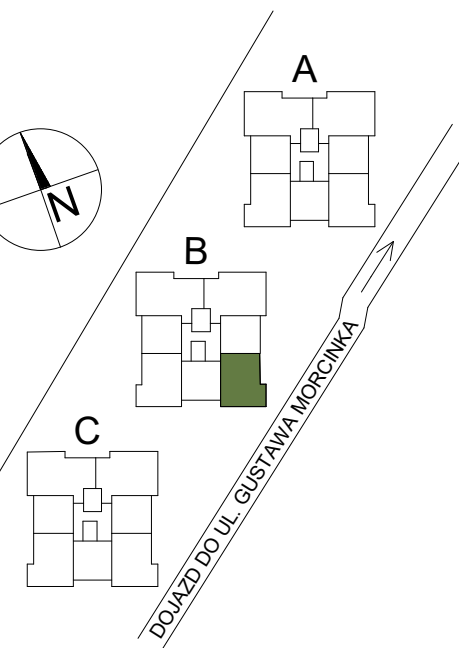
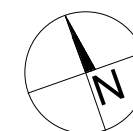
**MIESZKANIE NR 12**  
**POWIERZCHNIA: 51,54 m<sup>2</sup>**



## Mieszkanie nr 12

### Budynek B Piętro 1

SALON Z ANEKSEM KUCHENNYM	28.12 m <sup>2</sup>
SYPIALNIA	8.70 m <sup>2</sup>
SYPIALNIA	10.70 m <sup>2</sup>
ŁAZIENKA	4.02 m <sup>2</sup>
<b>POWIERZCHNIA UŻYTKOWA MIESZKANIA</b>	<b>51.54 m<sup>2</sup></b>



0 1 2 3 4 5 m