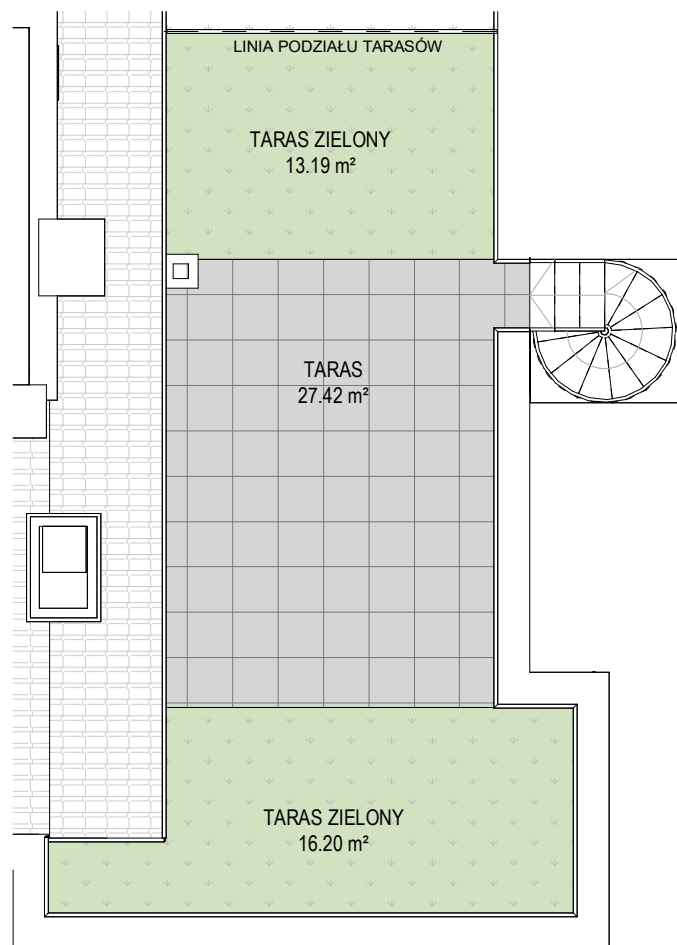
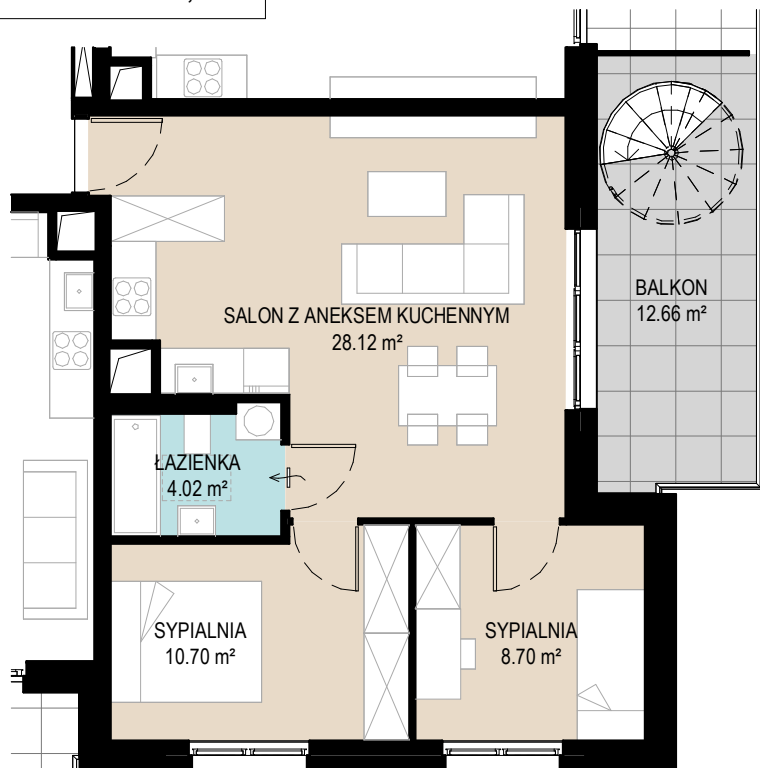


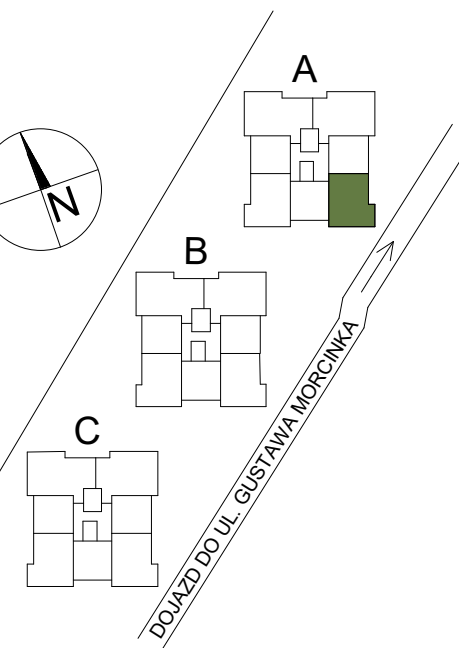
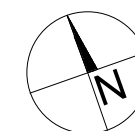
MIESZKANIE NR 26
POWIERZCHNIA: 51,54 m²



Mieszkanie nr 26

Budynek A Piętro 3

SALON Z ANEKSEM KUCHENNYM	28.12 m ²
SYPIALNIA	8.70 m ²
SYPIALNIA	10.70 m ²
ŁAZIENKA	4.02 m ²
POWIERZCHNIA UŻYTKOWA MIESZKANIA	51.54 m²



0 1 2 3 4 5 m